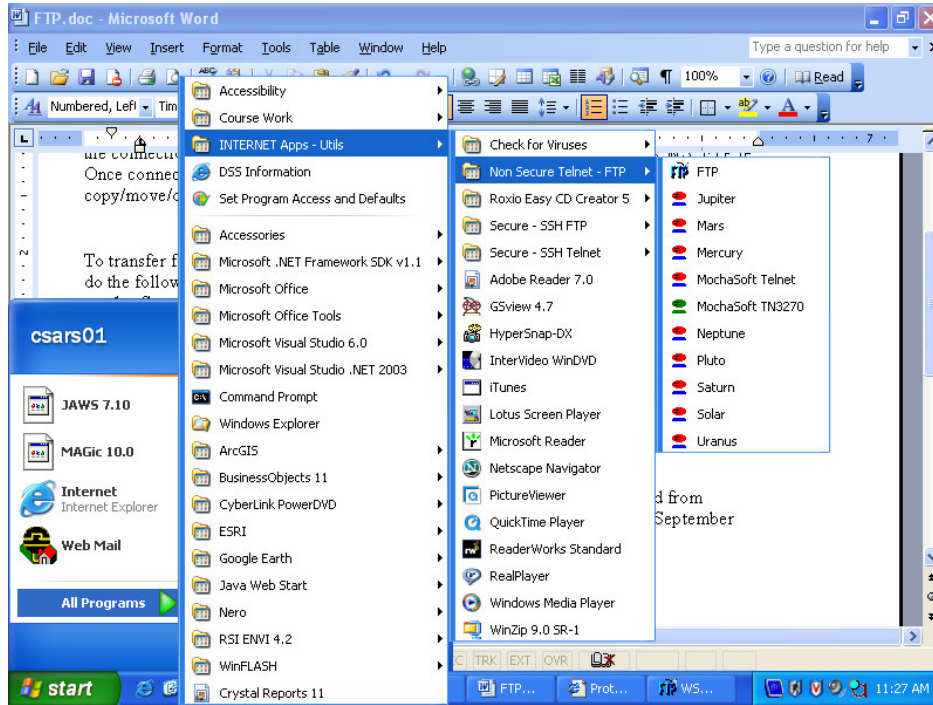


# FTP – File Transfer Protocol

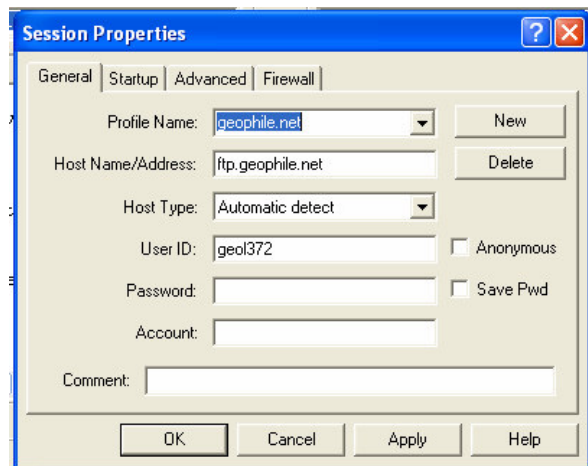
FTP stands for File Transfer Protocol and is a method for transferring files across a network that supports the TCP/IP protocol (i.e., the Internet or an intranet). There are two computers involved: a server and a client. The client computer is the one to initiate the connection to the other computer (server) via a software program such as WS\_FTP le. Once connected, the user can do a variety of functions, such as make a directory, copy/move/delete files, etc.

To transfer files from your computer to the directory I have made for you on my server, do the following:

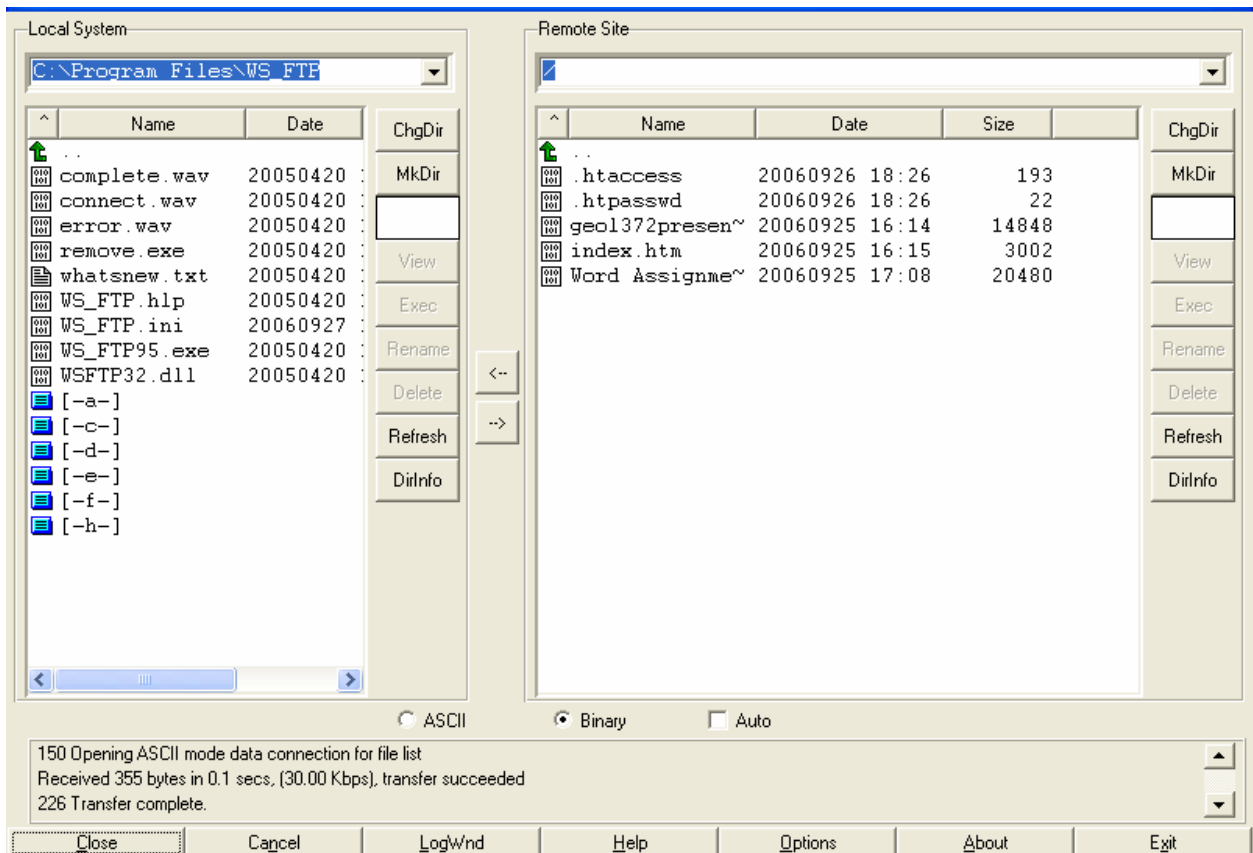
1. Start WS\_FTP le (Start menu > All Programs > INTERNET Apps-Utils > Non-secure Telnet FTP > FTP



2. Once the program is open, a dialog box will appear. Click on the “New” button to create a new profile. Enter the following information:
  - a. Profile Name: geophile.net
  - b. Host Name/Address: [ftp.geophile.net](http://ftp.geophile.net)
  - c. Host type: automatic detect
  - d. User ID: geol372
  - e. Password: geology
  - f. Click “Apply” to save settings
  - g. Click “OK” to launch FTP program



3. Once a connection has been made, you will see a window like the one below:



Note that there are two sides: the one on the left is the local or client side, and the one on the right is the remote or server side.

4. Create a directory for yourself on the remote computer:
  - a. Click the MKDIR button on the remote computer side.
  - b. Choose a name for your directory (first initial, last name, last name, whatever you choose)
  - c. Click "OK" to make your new directory.
5. Transfer your files to your directory
  - a. **ON THE REMOTE COMPUTER:** Double click on your directory to access the files in it.
  - b. **ON THE LOCAL COMPUTER:** Select the file or files you wish to copy to your directory on the remote computer. You may need to navigate your way out of the default local directory to the one your files are located in.
  - c. Click on the → button OR double click on the selected file names to begin the transfer.
  - d. That's it!
  - e. To copy files from the remote server to the local computer, just reverse the process.

Sources:

1. Wikimedia Foundation, Inc. (2006), File Transfer Protocol. Retrieved from [http://en.wikipedia.org/wiki/File\\_Transfer\\_Protocol](http://en.wikipedia.org/wiki/File_Transfer_Protocol) on Wednesday, September 27, 2006
2. Wikimedia Foundation, Inc. (2006), Internet protocol suite. Retrieved from [http://en.wikipedia.org/wiki/File\\_Transfer\\_Protocol](http://en.wikipedia.org/wiki/File_Transfer_Protocol) on Wednesday, September 27, 2006